

3. Specifications

3.1 Specification Sheet

Basic Parameters

Model	-	1. SOH07CH-E32DA1B
Product Code	-	1. CB574002000
Power Supply	Rated Voltage	V~ 220-240
	Rated Frequency	Hz 50
	Phases	- 1
Power Supply Mode	-	Outdoor
Cooling Capacity	W	2500
Heating Capacity	W	2800
Cooling Power Input	W	660
Heating Power Input	W	700
Cooling Current Input	A	3.1
Heating Current Input	A	3.2
Rated Input	W	1500
Rated Cooling Current	A	6
Rated Heating Current	A	7.5
Air Flow Volume	m ³ /h	500/470/430/390/320/270/250
Dehumidifying Volume	L/h	0.6
EER	W/W	3.79
COP	W/W	4
SEER	-	6.8
SCOP (Average/Warmer/Colder)	-	4.1/5.1/-
Application Area	m ²	10-16

Indoor Unit Parameters

Indoor Unit Model	-	1. SOH07CH-E32DA1B/I	
Indoor Unit Product Code	-	1. CB574N02000	
Fan Type	-	Cross-flow	
Fan Diameter Length (D×L)	mm	Φ92×505	
Cooling Speed	r/min	1300/1200/1120/1050/920/800/750	
Heating Speed	r/min	1300/1200/1120/1050/950/850/800	
Fan Motor Power Output	W	20	
Fan Motor RLA	A	0.22	
Fan Motor Capacitor	μF	1	
Evaporator Form	-	Aluminum Fin-copper Tube	
Evaporator Pipe Diameter	mm	Φ5	
Evaporator Row-fin Gap	mm	2-1.4	
Evaporator Coil Length (L×D×W)	mm	509×22.8×266.7	
Swing Motor Model	-	MP24HF/MP24HF	MP24HF
Swing Motor Power Output	W	1.5/1.5	1.5
Fuse Current	A	3.15	
Sound Pressure Level	dB (A)	Cooling: 39/36/34/33/29/25/22 Heating: 38/36/33/32/29/25/23	
Sound Power Level	dB (A)	Cooling: 55/49/46/45/41/37/34 Heating: 55/49/46/45/42/38/36	
Dimension (W×H×D)	mm	708X260X185	
Dimension of Carton Box (L×W×H)	mm	748X316X247	
Dimension of Package (L×W×H)	mm	753X332X258	
Net Weight	kg	7.5	
Gross Weight	kg	9	

Outdoor Unit Parameters

Outdoor Unit Model	-	SOH07CH-E32DA1B/O
Outdoor Unit Product Code	-	CB385W01100/CB385W01102
Compressor Manufacturer	-	ZHUHAI LANDA COMPRESSOR CO., LTD.
Compressor Model	-	QXF-N075zC170
Compressor Oil	-	FW68DA
Compressor Type	-	Rotary
Compressor LRA.	A	/
Compressor RLA	A	3
Compressor Power Input	W	633
Compressor Overload Protector	-	/
Throttling Method	-	Capillary
Set Temperature Range	°C	16~30
Cooling Operation Ambient Temperature Range	°C	-15~43
Heating Operation Ambient Temperature Range	°C	-15~24
Condenser Form	-	Aluminum Fin-copper Tube
Condenser Pipe Diameter	mm	Φ7.94
Condenser Rows-fin Gap	mm	1-1.2
Condenser Coil Length (L×D×W)	mm	637×12.7×419
Fan Motor Speed	rpm	930±20
Fan Motor Power Output	W	30
Fan Motor RLA	A	0.4
Fan Motor Capacitor	μF	/
Outdoor Unit Air Flow Volume	m ³ /h	1400
Fan Type	-	Axial-flow

Fan Diameter	mm	Φ350
Defrosting Method	-	Automatic Defrosting
Climate Type	-	T1
Isolation	-	I
Moisture Protection	-	IPX4
Permissible Excessive Operating Pressure for the Discharge Side	MPa	4.3
Permissible Excessive Operating Pressure for the Suction Side	MPa	2.5
Sound Pressure Level	dB (A)	50
Sound Power Level	dB (A)	60
Dimension (W×H×D)	mm	710X450X293
Dimension of Carton Box (L×W×H)	mm	761X327X500
Dimension of Package (L×W×H)	mm	764X330X525
Net Weight	kg	21
Gross Weight	kg	23
Refrigerant	-	R32
Refrigerant Charge	kg	0.45

Connection Pipe Parameters

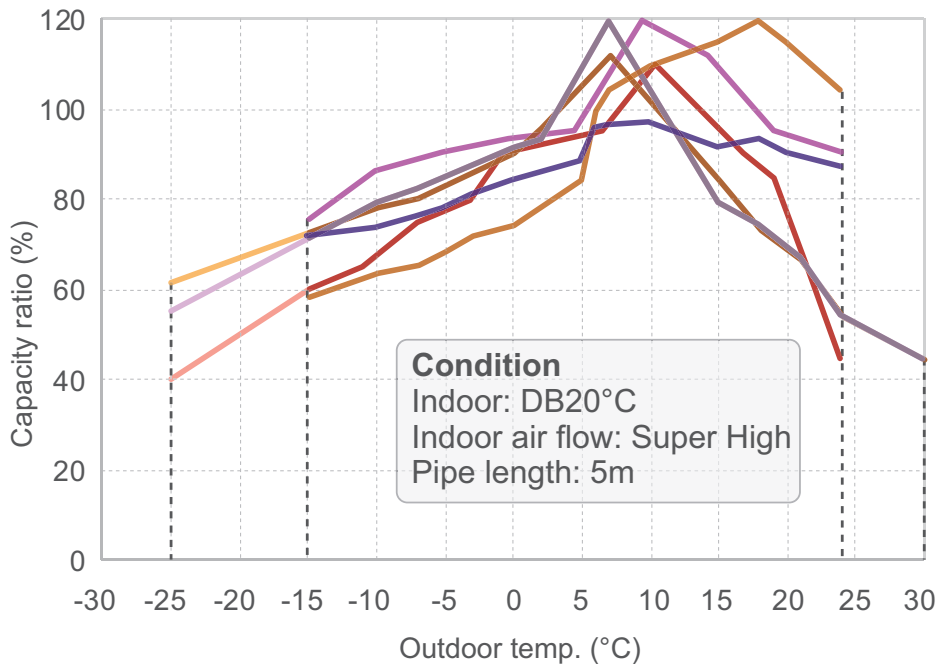
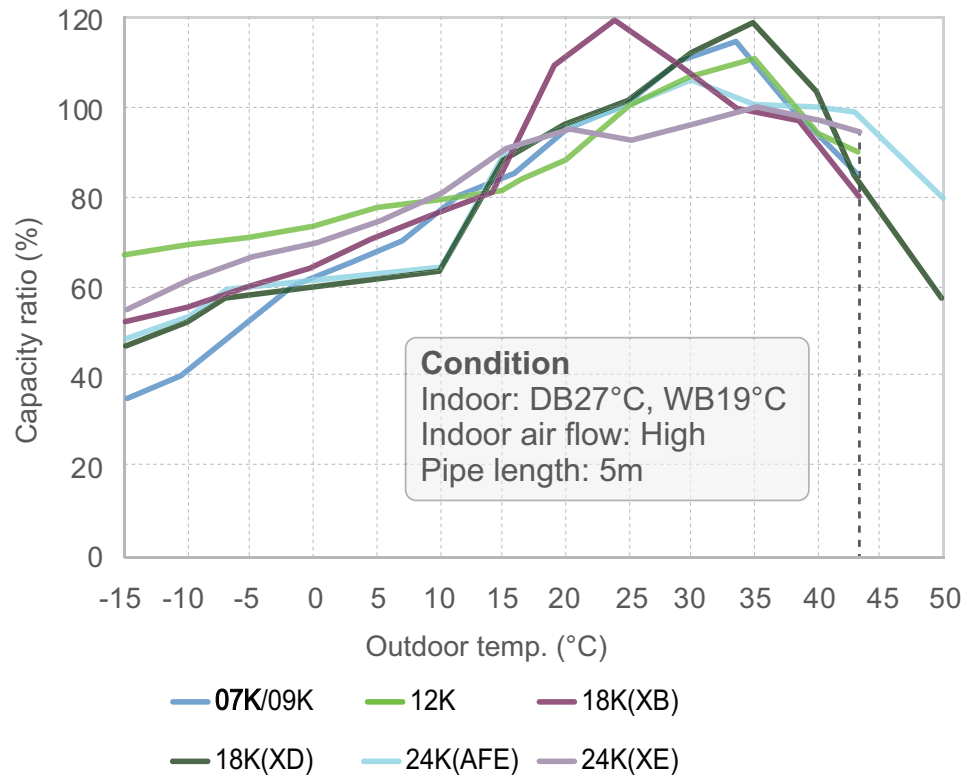
Connection Pipe Length	m	5
Connection Pipe Gas Additional Charge	g/m	16
Outer Diameter Liquid Pipe	inch	1/4
Outer Diameter Gas Pipe	inch	3/8
Max Distance Height	m	10
Max Distance Length	m	15

Note: The connection pipe applies metric diameter.

The above data is subject to change without notice. Please refer to the nameplate of the unit.

3.2 Capacity Variation Ratio According to Temperature

Cooling ►

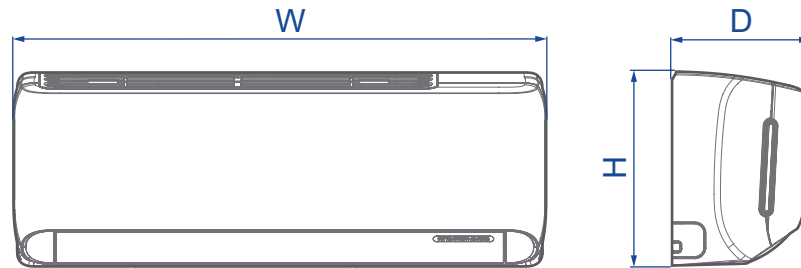


◄ Heating

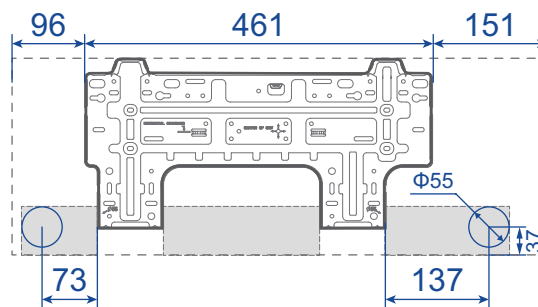
- 07K/09K**
- 12K**
- 18K(XB)**
- 09K**
- 18K(XD)**
- 24K(AFE)**
- 24K(XE)**
- (-25°C~30°C Heating operation ambient temperature range)
- (-25°C~30°C Heating operation ambient temperature range)
- (-25°C~30°C Heating operation ambient temperature range)

4. Outline Dimension Diagram

4.1 Indoor Unit



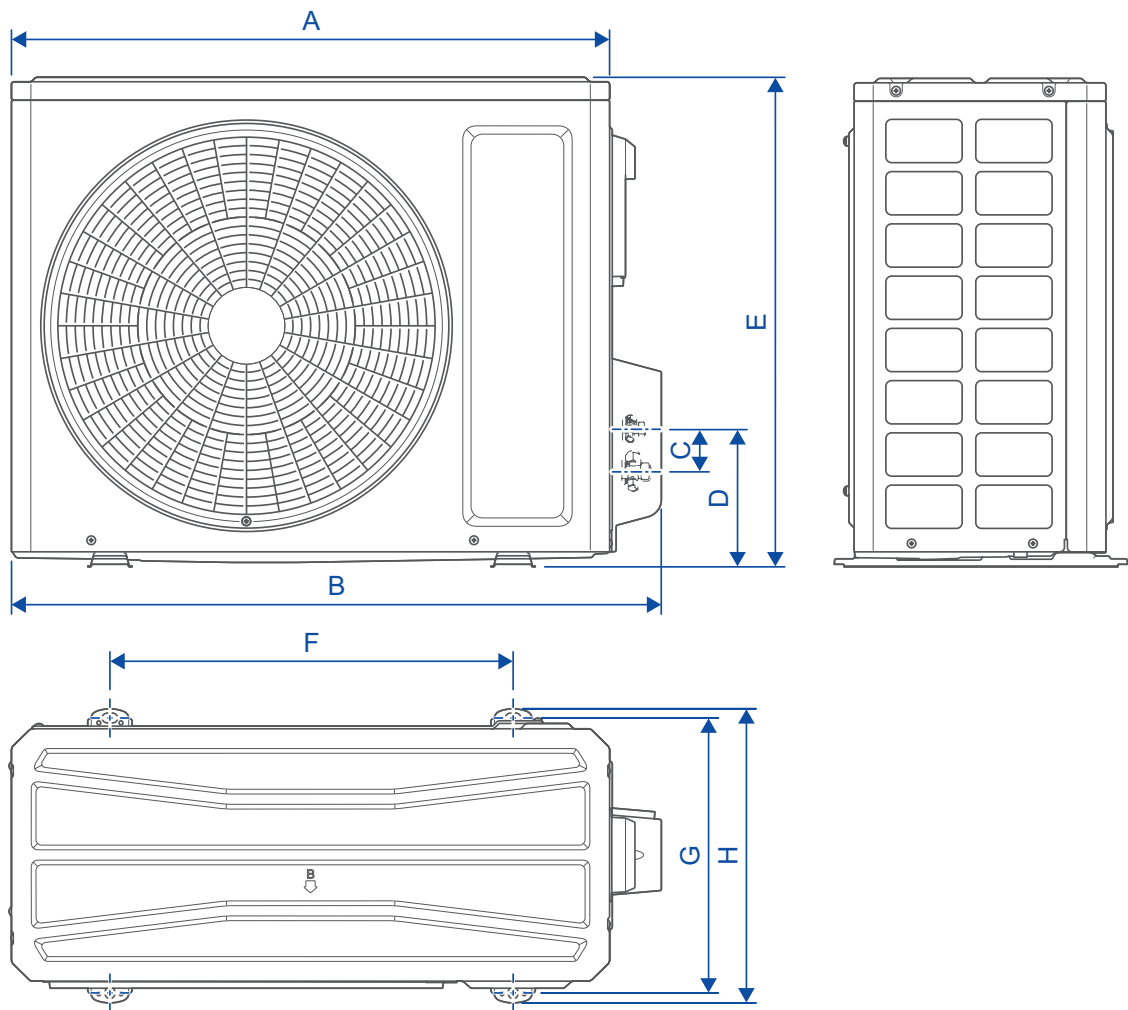
SOH07CH-E32DA1B



Unit: mm

Indoor Unit Model	W	H	D
SOH07CH-E32DA1B	708	260	185

4.2 Outdoor Unit



NOTE: The appearance of outdoor unit is for reference only.

Unit: mm

Outdoor Unit Model	A	B	C	D	E	F	G	H
SOH07CH-E32DA1B/O	650	710	65	158.8	450	430	271	293